



# ZONING

The proposals seek to create a sustainable, inclusive space that **balances active use with natural preservation**.

It needs to include **safe pedestrian and vehicle access**. It has two distinct fields - one for community activities like growing and performing, and the other for quiet, nature-focused uses.

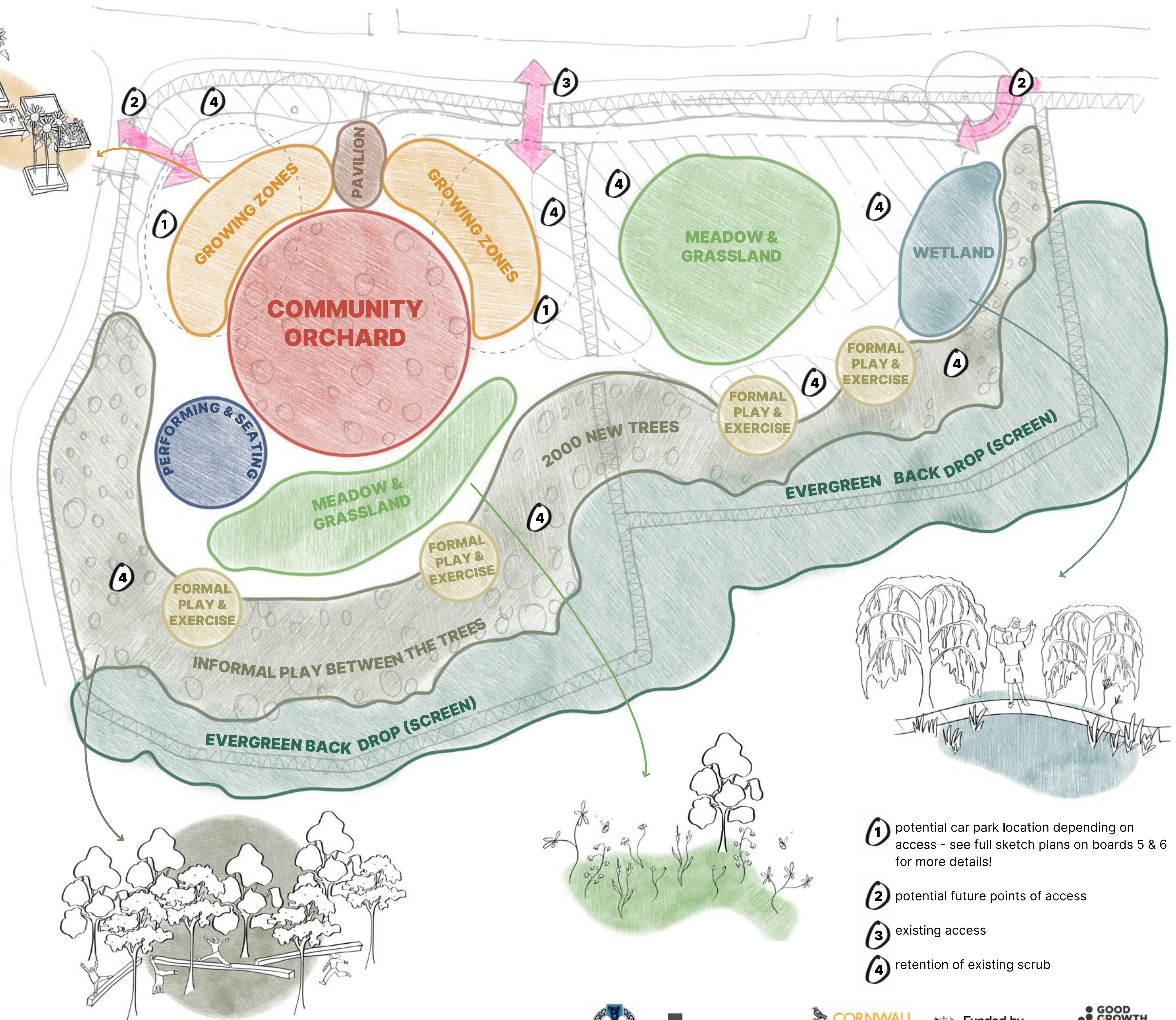
Key features include planting **2,000 native trees (secured via grant funding)**, establishing a Cornish orchard, creating wildflower meadows, wetland habitats, and re-wilded areas - alongside the **retention of all existing vegetation on site** where possible, to enhance biodiversity and create new habitats/

Paths will loop through the site, **linking to local footpaths and bridleways**. Infrastructure may include a central off-grid shelter or classroom, smaller hideouts, flexible event parking, and renewable energy sources.

The project will **support biodiversity, community engagement, local partnerships, outdoor learning** and **well-being**.

**MABE**  
**MABE**  
**MABE**  
community — open space

BOARD 4



- ① potential car park location depending on access - see full sketch plans on boards 5 & 6 for more details!
- ② potential future points of access
- ③ existing access
- ④ retention of existing scrub



LAVIGNE LONSDALE



Funded by  
UK Government

