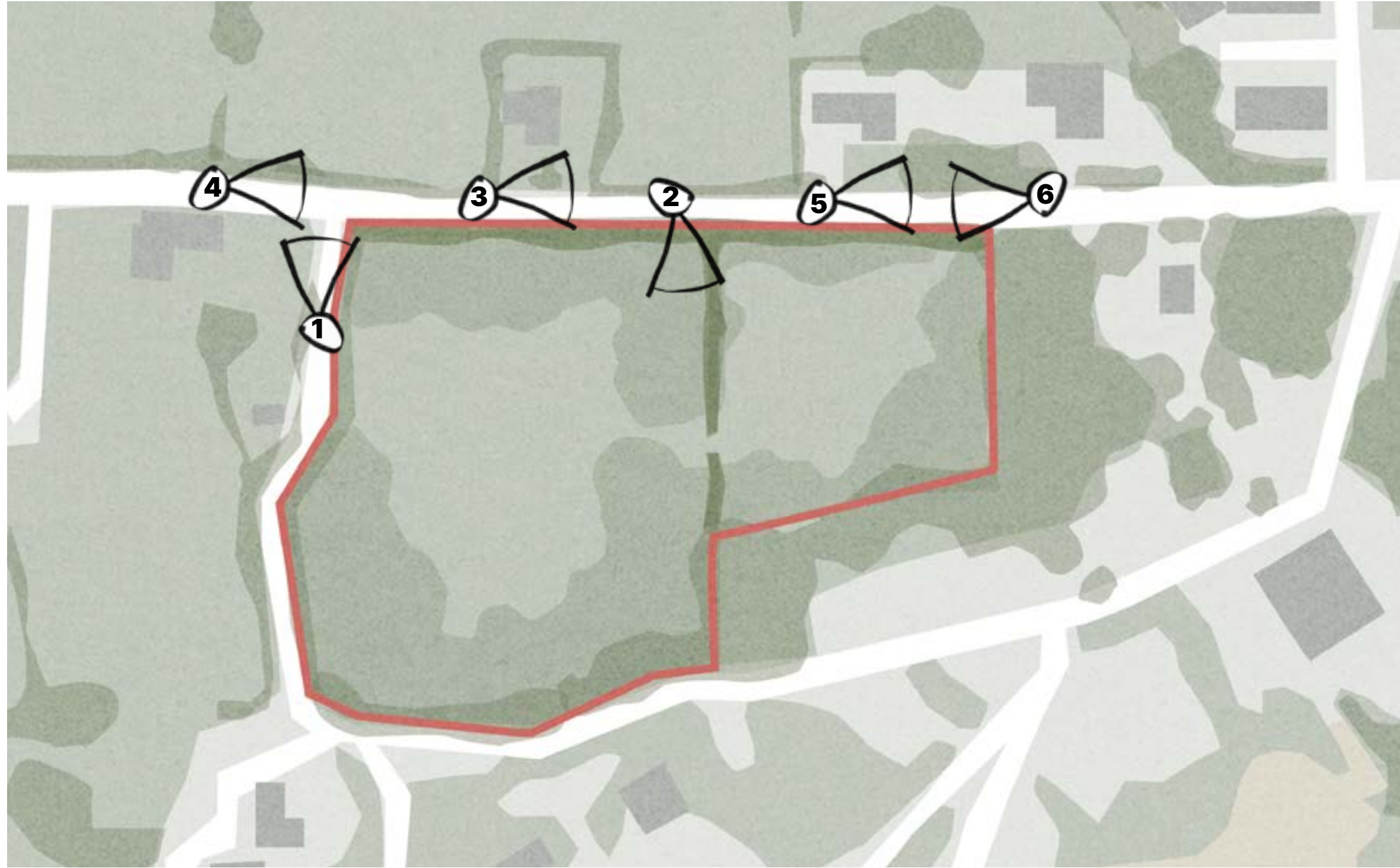




1) Quarry Lane looking North to Antron Hill;
 Poor visibility from the junction, with the lane also being used by quarry lorries.
 The lane is also a designated Public Right of Way, path 217/17/1.



2) Existing entrance;
 Existing field gated entrance along Antron Hill,
 currently overgrown.



3) Antron Hill Looking East;
 High Cornish Hedgebanks and speed restrictions in place.



4) Quarry Lane & Antron Hill Junction;
 Speed restrictions, poor visibility to junction and overhead wires to review in design.

SITE ANALYSIS

MABE

MABE

MABE

community — open space



5) Antron Hill looking East;
 No footpath requires people to walk in road which is unsafe – safer connections to be reviewed as part of designs.



6) Antron Hill looking West;
 Existing footpath from Village stops – continuation or safe connection required



LAVIGNE LONSDALE



Funded by
 UK Government

