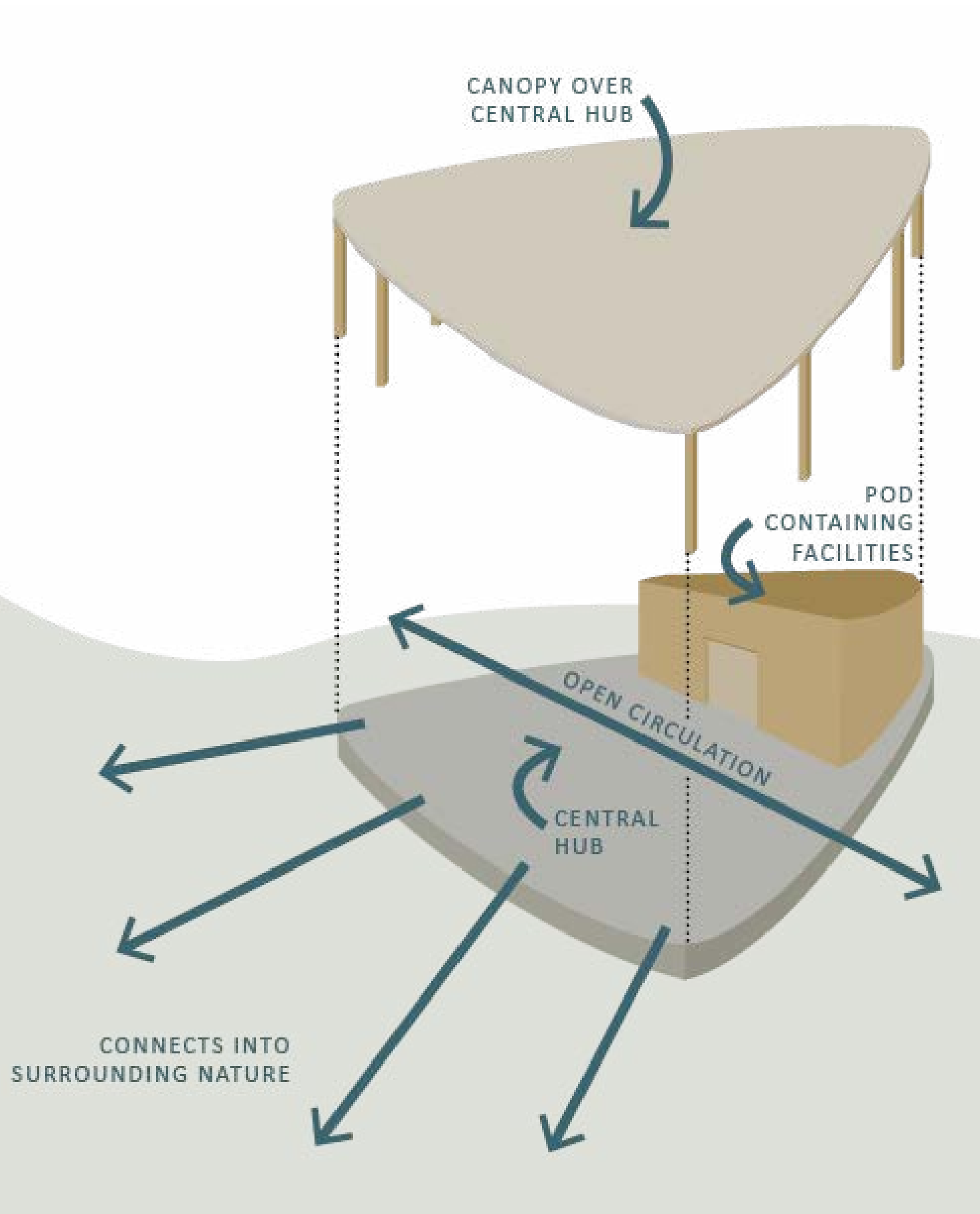


# SKETCH 3 & SHELTERS

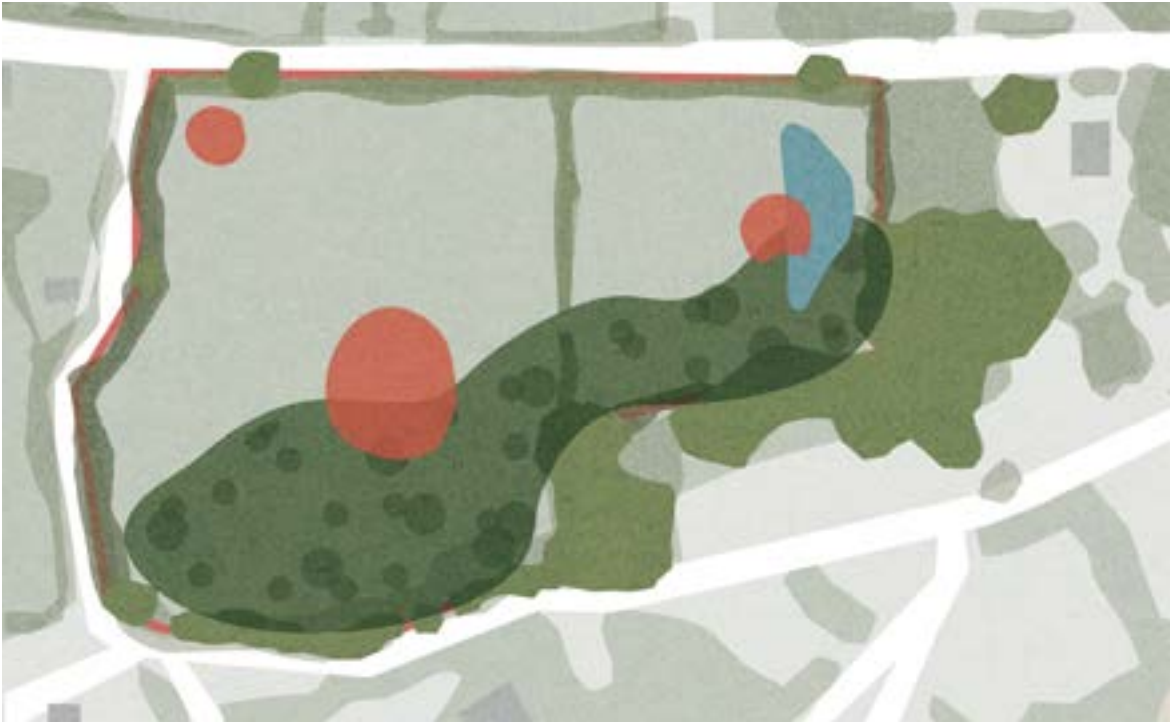


A shelter/pavilion could be included to provide a **flexible covered space** - offering shade in summer, cover in rain, and a welcoming focal point. Options include **one main structure** or **several smaller shelters** across the site.

Designs could feature rainwater collection for reuse on site, standardised materials to **reduce waste**, and a low-carbon approach using **local resources**. Here are a few early ideas and diagrams.



**Option 1** a single structure forming the focal entrance point



**Option 2** a collection of structures integrated within the proposed landscape

